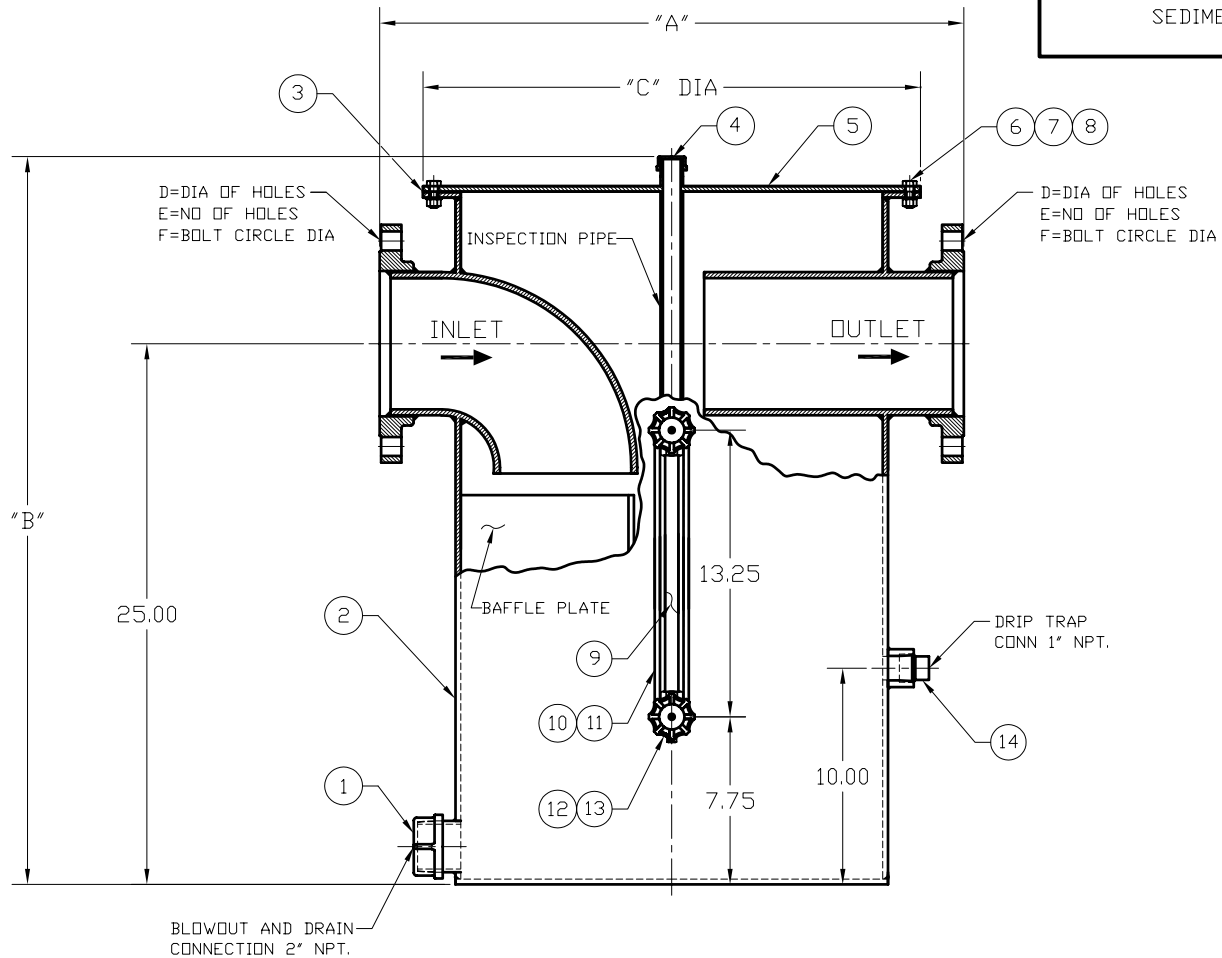


MODEL 8330
SEDIMENT TRAP



SIZE	FLANGE DRILLING	A	B	C	D	E	F
2"	150 LB	27.00 (686)	33.75 (857)	23.00 (584)	.75 (19)	4	4.75 (120.6)
3"	150 LB	27.00 (686)	33.75 (857)	23.00 (584)	.75 (19)	4	6.00 (152.4)
4"	150 LB	27.00 (686)	33.75 (857)	23.00 (584)	.75 (19)	8	7.50 (190.5)
6"	150 LB	27.00 (686)	33.75 (857)	23.00 (584)	.88 (22.2)	8	9.50 (241.3)
8"	150 LB	38.00 (965)	35.75 (908)	33.00 (838)	.88 (22.2)	8	11.75 (298.4)
10"	150 LB	38.00 (965)	35.75 (908)	33.00 (838)	1.00 (25.4)	12	14.25 (361.9)
12"	150 LB	38.00 (965)	35.75 (908)	33.00 (838)	1.00 (25.4)	12	17.00 (431.8)

DIMENSIONS IN PARENTHESIS ARE IN MILLIMETERS.

TAGS AND SPECIFICATIONS



GROTH CORPORATION
HOUSTON, TEXAS

CERTIFIED

DWG. NO. C-85930

REVISION:

DATE:

ITEM	NAME	MATL	SPEC
1	PIPE CAP GALVANIZED	CS	
2	BODY	CS	
3 *	GASKET	BUNA-N	
4	PIPE CAP	CS	
5	COVER	CS	
6	HEX BOLT	CS	
7	LOCK WASHER	CS	
8	HEX NUT	CS	
9 *	SIGHT GLASS	PYREX	OPTIONAL
10	GUARD ROD	BRASS	OPTIONAL
11	HEX NUT	BRASS	OPTIONAL
12	UPPER VALVE	BRASS	OPTIONAL
13	LOWER VALVE	BRASS	OPTIONAL
14	PLUG GALVANIZED	CS	

* SPARE PARTS

DWG NUMBER: C85930
 BOM NUMBER: 85930020 REV 0

MATERIAL: CARBON STEEL
 MODEL: 8330