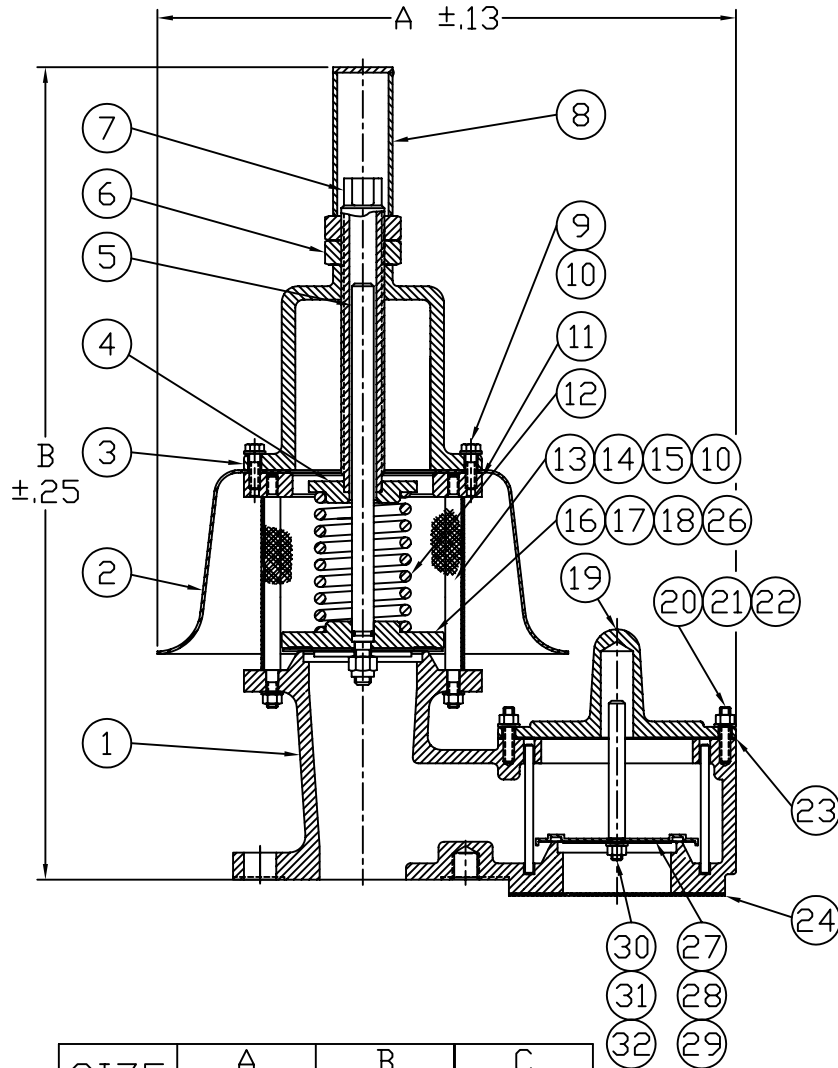
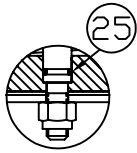
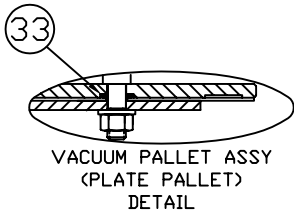
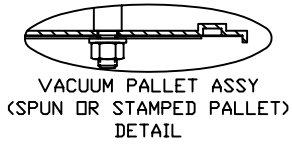


MODEL 1201B  
PRESSURE/VACUUM RELIEF VENT  
SPRING LOADED



NOTES:

1. "C" DIMENSION (NOT SHOWN) IS MAX. WIDTH.
2. SEE DWG C-92526 FOR ANSI, PN10/PN16 & JIS10K DRILLING PATTERNS.

SIZE	A		B		C	
	In.	mm	In.	mm	In.	mm
2"	13.75	349	19.88	505	9.50	241
3"	18.50	470	21.88	556	13.00	330
4"	19.63	498	26.63	676	13.00	330
6"	28.00	711	38.13	969	19.50	495
8"	33.75	857	44.63	1134	23.50	597
10"	38.25	972	52.13	1324	25.50	648
12"	41.00	1041	54.88	1394	25.50	648

TAGS AND SPECIFICATIONS

THIS DRAWING EMBODIES A CONFIDENTIAL PROPRIETARY DESIGN ORIGINATED BY GROTH CORPORATION, AND ALL DESIGN, MANUFACTURING, REPRODUCTION, USE AND SALE RIGHTS, REGARDING THE SAME ARE EXPRESSLY RESERVED. IT IS SUBMITTED UNDER A CONFIDENTIAL RELATIONSHIP FOR A SPECIFIED PURPOSE, AND THE RECIPIENT AGREES BY ACCEPTING THIS DRAWING NOT TO SUPPLY OR DISCLOSE ANY INFORMATION REGARDING IT TO ANY UNAUTHORIZED PERSONS OR TO INCORPORATE IN OTHER PROJECTS ANY SPECIAL FEATURES PECULIAR TO THIS DESIGN. ALL PATENTS RIGHTS HERETO ARE EXPRESSLY RESERVED BY GROTH CORPORATION, 1202 HAHLO, HOUSTON, TEXAS 77020

REV.	DATE	BY	ECN NO.
N	05-02-95	GS	950046
D	02-02-99	JL	99004
P	08-22-01	ESQ	10276



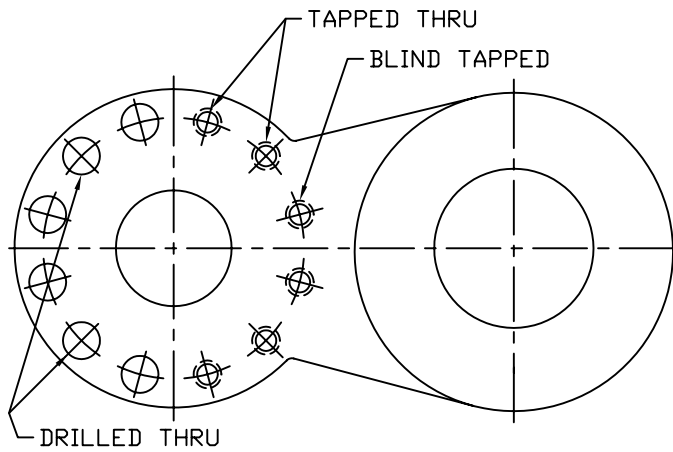
GROTH CORPORATION  
a Continental Disc Company

APPROVED BY:  
DATE:

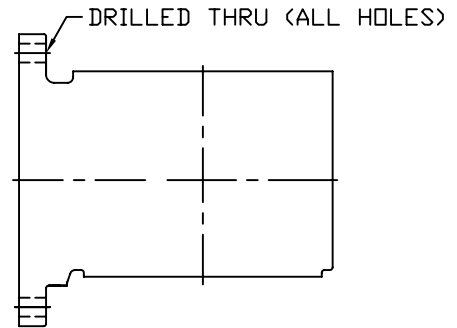
CHECKED BY:  
DATE:

DWG. NO. : C-83844  
DWN BY: ES QUINTERO

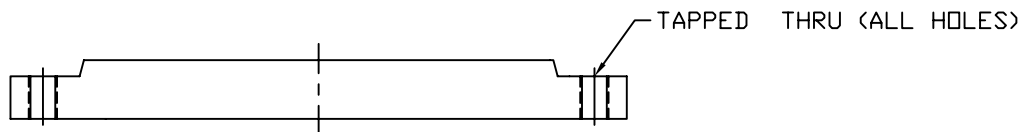
1200A SERIES  
FLANGE DRILLING DIMENSION TABLES  
(ANSI 150#, DIN PN10/16, JIS 10K)



INLET FLANGE  
(VIEWED FROM BOTTOM)  
MODELS: 1200A, 1220A, 1300A  
1201B, 1221B, 1301A



OUTLET FLANGE  
MODELS: 1220A, 1260A, 1360A  
1221B, 1261A, 1361A



BODY  
MODELS: 2300A & 2301A

DRILLED HOLES

SIZE	FLANGE DRILLING	HOLE DIA.		TAPPED HOLE	NO. OF HOLES	BOLT CIRCLE DIA.	
		in	mm			in	mm
2"	ANSI 150#	.75	19	5/8-11 UNC-2B	4	4.75	121
3"	ANSI 150#	.75	19	5/8-11 UNC-2B	4	6.00	152
4"	ANSI 150#	.75	19	5/8-11 UNC-2B	8	7.50	191
6"	ANSI 150#	.88	22	3/4-10 UNC-2B	8	9.50	241
8"	ANSI 150#	.88	22	3/4-10 UNC-2B	8	11.75	298
10"	ANSI 150#	1.00	25	7/8-9 UNC-2B	12	14.25	362
12"	ANSI 150#	1.00	25	7/8-9 UNC-2B	12	17.00	432
14"	ANSI 150#	1.13	29	1 -12 UNC-2B	12	18.75	476

SIZE	FLANGE DRILLING	HOLE DIA.		TAPPED HOLE	NO. OF HOLES	BOLT CIRCLE DIA.	
		in	mm			in	mm
2"	JIS 10K	.75	19	M16 x 2.0-6H	4	4.72	120
3"	JIS 10K	.75	19	M16 x 2.0-6H	8	5.91	150
4"	JIS 10K	.75	19	M16 x 2.0-6H	8	6.89	175
6"	JIS 10K	.91	23	M20 x 2.5-6H	8	9.45	240
8"	JIS 10K	.91	23	M20 x 2.5-6H	12	11.42	290
10"	JIS 10K	.98	25	M22 x 2.5-6H	12	13.98	355
12"	JIS 10K	.98	25	M22 x 2.5-6H	16	15.75	400
14"	JIS 10K	.98	25	M22 x 2.5-6H	16	17.52	445

SIZE	FLANGE DRILLING	HOLE DIA.		TAPPED HOLE	NO. OF HOLES	BOLT CIRCLE DIA.	
		in	mm			in	mm
2"	PN 10	.71	18	M16 x 2.0-6H	4	4.92	125
3"	PN 10	.71	18	M16 x 2.0-6H	8	6.30	160
4"	PN 10	.71	18	M16 x 2.0-6H	8	7.09	180
6"	PN 10	.87	22	M20 x 2.5-6H	8	9.45	240
8"	PN 10	.87	22	M20 x 2.5-6H	8	11.61	295
10"	PN 10	.87	22	M20 x 2.5-6H	12	13.78	350
12"	PN 10	.87	22	M20 x 2.5-6H	12	15.75	400
14"	PN 10	.87	22	M20 x 2.5-6H	16	18.11	460

SIZE	FLANGE DRILLING	HOLE DIA.		TAPPED HOLE	NO. OF HOLES	BOLT CIRCLE DIA.	
		in	mm			in	mm
2"	PN 16	.71	18	M16 x 2.0-6H	4	4.92	125
3"	PN 16	.71	18	M16 x 2.0-6H	8	6.30	160
4"	PN 16	.71	18	M16 x 2.0-6H	8	7.09	180
6"	PN 16	.87	22	M20 x 2.5-6H	8	9.45	240
8"	PN 16	.87	22	M20 x 2.5-6H	12	11.61	295
10"	PN 16	1.02	26	M24 x 3.0-6H	12	13.98	355
12"	PN 16	1.02	26	M24 x 3.0-6H	12	16.14	410
14"	PN 16	1.02	26	M24 x 3.0-6H	16	18.50	470

THIS DRAWING EMBODIES A CONFIDENTIAL PROPRIETARY DESIGN ORIGINATED BY GROTH CORPORATION, AND ALL DESIGN, MANUFACTURING, REPRODUCTION, USE AND SALE RIGHTS, REGARDING THE SAME ARE EXPRESSLY RESERVED. IT IS SUBMITTED UNDER A CONFIDENTIAL RELATIONSHIP FOR A SPECIFIED PURPOSE, AND THE RECIPIENT AGREES BY ACCEPTING THIS DRAWING NOT TO SUPPLY OR DISCLOSE ANY INFORMATION REGARDING IT TO ANY UNAUTHORIZED PERSONS OR TO INCORPORATE IN OTHER PROJECTS ANY SPECIAL FEATURES PECULIAR TO THIS DESIGN. ALL PATENTS RIGHTS HERETO ARE EXPRESSLY RESERVED BY GROTH CORPORATION, 1202 HAHLO, HOUSTON, TEXAS 77020

REV.	DATE	BY	ECN NO.
A	08-22-01	ESQ	10276



GROTH CORPORATION  
a Continental Disc Company

APPROVED BY:	CHECKED BY:	DWG. NO. : C-92526
DATE:	DATE:	DWN BY: ES QUINTERO

**MODEL 1201B**

**BILL OF MATERIAL**

ITEM	DESCRIPTION	STANDARD MATERIALS OF CONSTRUCTION			OPTIONAL FEATURES
		ALUMINUM <input type="checkbox"/>	CARBON STL <input type="checkbox"/>	316 SS <input type="checkbox"/>	
1	BODY	AL GR 356 T6	CS WCB	CF-8M (316 SS)	
2	WEATHERHOOD	ALUM	316 SS	316 SS	
3	CHAMBER, SPRING	AL GR 356 T6	CS WCB	CF-8M (316 SS)	
4	BUTTON, SPRING	316 SS	316 SS	316 SS	
5	STEM, PRESSURE	316 SS	316 SS	316 SS	
6	NUT, JAM	CS	CS	316 SS	
7	SCREW, ADJUSTMENT	316 SS	316 SS	316 SS	
8	CAP	CS	CS	316 SS	
9	BOLT, HEX	SS	SS	SS	
10	WASHER, LOCK	SS	SS	SS	
11	PLATE, SUPPORT	CS	CS	316 SS	
12	SPRING (1)	CS	CS	17-7 PH	
13	ROD, GUIDE	316 SS	316 SS	316 SS	
14	SCREEN, PRESSURE	316 SS	316 SS	316 SS	
15	NUT, HEX	SS	SS	SS	
16	PALLET, PRESSURE	316 SS	316 SS	316 SS	
17	PLATE, RETAINER (PRESSURE)	316 SS	316 SS	316 SS	
18	NUT, HEX LOCK	SS	SS	SS	
19	COVER	AL GR 356 T6	CS WCB	CF-8M (316 SS)	
20	NUT, HEX	SS	SS	SS	
21	STUD	SS	SS	SS	
22	WASHER, LOCK	SS	SS	SS	
23	* GASKET, COVER	NON-ASB	NON-ASB	NON-ASB	
24	SCREEN (OPTIONAL)	316 SS	316 SS	316 SS	
25	* O-RING, PLATE PALLET (2)	VITON	VITON	VITON	
26	* DIAPHRAGM, PRESSURE (3)	Teflon® FEP	Teflon® FEP	Teflon® FEP	
27	PALLET, VACUUM	316 SS	316 SS	316 SS	
28	PLATE, RETAINER (VACUUM)	316 SS	316 SS	316 SS	
29	* DIAPHRAGM, VACUUM (3)	Teflon® FEP	Teflon® FEP	Teflon® FEP	
30	NUT, HEX	SS	SS	SS	
31	WASHER, LOCK	SS	SS	SS	
32	STEM, VACUUM	316 SS	316 SS	316 SS	
33	* O-RING, PLATE PALLET (2)	VITON	VITON	VITON	
34	SEAT - INSERT (4) NOT SHOWN	N.A.	316 SS	N.A.	
35	PALLET WEIGHT (5) (NOT SHOWN)	LEAD	LEAD	LEAD	

\* SPARE PARTS

(1) ALTERNATE SPRING MATERIALS: AL/CS UNITS - CHROME SILICON & 5160;  
316 SS UNITS - 17-4 PH SS

(2) ELASTOMERS ALSO AVAILABLE IN AFLAS, BUNA-N, EPR & KALREZ

(3) Teflon® is a registered trademark of E.I. du Pont de Nemours and Co. used under license.

(4) OPTIONAL SEAT: AL UNITS - BONDED; CS UNITS - WELDED

(5) AVAILABLE IN 316 SS; CONSULT FACTORY FOR ALT. MATERIALS.

DWG. NUMBER:

C-83844

BOM NUMBER:

83844bom.xls

Rev. A



a Continental Disc Company