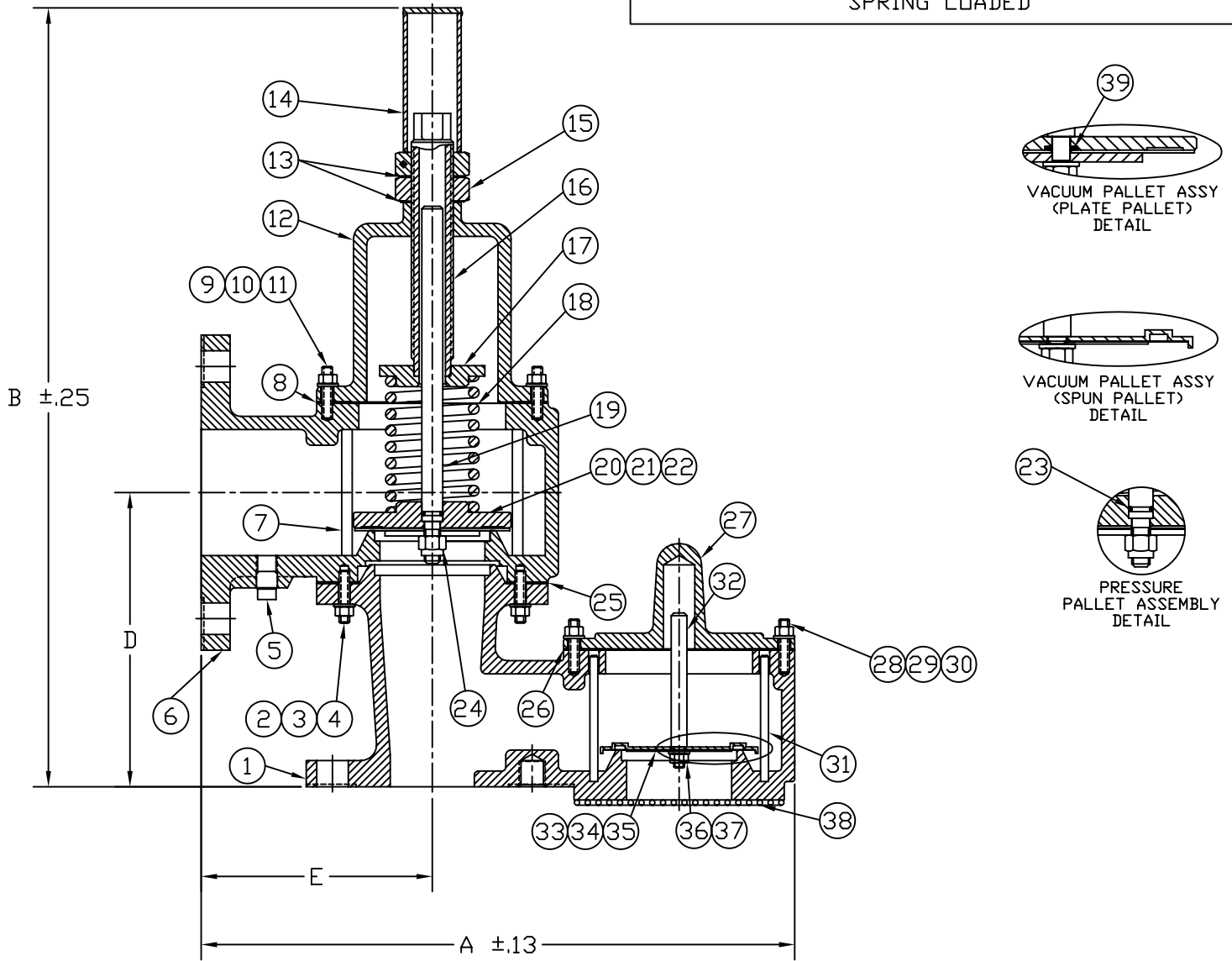


MODEL 1221B
PRESSURE/VACUUM RELIEF VENT
SPRING LOADED



NOTES:

1. "C" DIMENSION (NOT SHOWN) IS MAX. WIDTH.
2. SEE DWG. C-92526 FOR ANSI, PN10/PN16 & JIS 10K DRILLING PATTERNS.

SIZE	A		B		C		D		E	
	In.	mm	In.	mm	In.	mm	In.	mm	In.	mm
2' x 3'	14.25	362	19.38	492	7.50	191	7.00	178	5.50	140
3' x 4'	18.00	457	23.13	588	9.00	229	8.13	207	6.00	152
4' x 6'	19.25	489	28.38	721	11.00	279	9.50	241	6.50	165
6' x 8'	26.50	673	39.50	1003	13.50	343	12.75	324	8.50	216
8' x 10'	32.50	826	46.00	1168	16.00	406	15.25	387	10.75	273
10' x 12'	37.50	953	53.25	1353	19.00	483	18.00	457	12.50	318
12' x 14'	42.75	1086	58.63	1489	21.00	533	20.63	524	15.00	381

TAGS AND SPECIFICATIONS

THIS DRAWING EMBODIES A CONFIDENTIAL PROPRIETARY DESIGN ORIGINATED BY GROTH CORPORATION, AND ALL DESIGN, MANUFACTURING, REPRODUCTION, USE AND SALE RIGHTS, REGARDING THE SAME ARE EXPRESSLY RESERVED. IT IS SUBMITTED UNDER A CONFIDENTIAL RELATIONSHIP FOR A SPECIFIED PURPOSE, AND THE RECIPIENT AGREES BY ACCEPTING THIS DRAWING NOT TO SUPPLY OR DISCLOSE ANY INFORMATION REGARDING IT TO ANY UNAUTHORIZED PERSONS OR TO INCORPORATE IN OTHER PROJECTS ANY SPECIAL FEATURES PECULIAR TO THIS DESIGN. ALL PATENTS RIGHTS HERETO ARE EXPRESSLY RESERVED BY GROTH CORPORATION, 1202 MAHLD, HOUSTON, TEXAS 77020

REV.	DATE	BY	ECN NO.
P	08-22-01	ESQ	10276



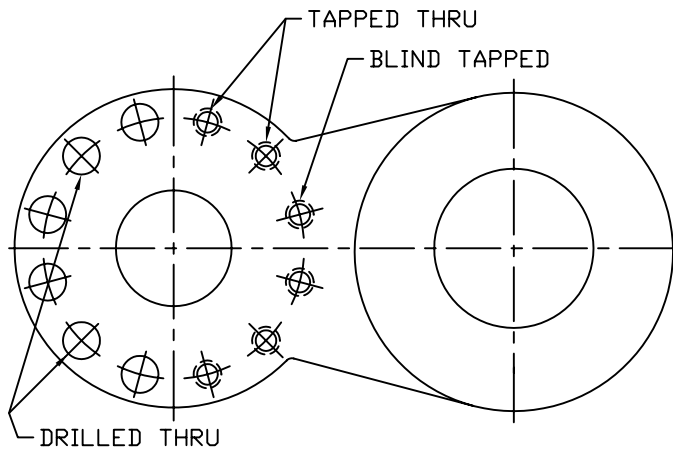
GROTH CORPORATION
a Continental Disc Company

APPROVED BY:
DATE:

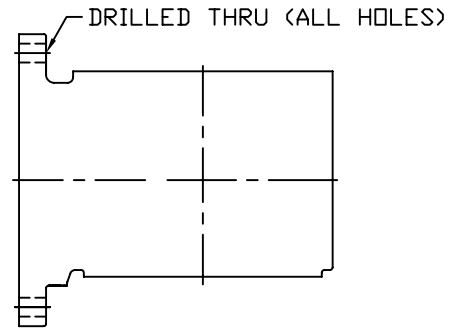
CHECKED BY:
DATE:

DWG. NO. : C-83771
DWN BY: ES QUINTERO

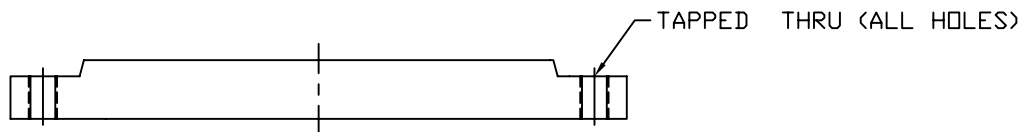
1200A SERIES
FLANGE DRILLING DIMENSION TABLES
(ANSI 150#, DIN PN10/16, JIS 10K)



INLET FLANGE
(VIEWED FROM BOTTOM)
MODELS: 1200A, 1220A, 1300A
1201B, 1221B, 1301A



OUTLET FLANGE
MODELS: 1220A, 1260A, 1360A
1221B, 1261A, 1361A



BODY
MODELS: 2300A & 2301A

DRILLED HOLES

SIZE	FLANGE DRILLING	HOLE DIA.		TAPPED HOLE	NO. OF HOLES	BOLT CIRCLE DIA.	
		in	mm			in	mm
2"	ANSI 150#	.75	19	5/8-11 UNC-2B	4	4.75	121
3"	ANSI 150#	.75	19	5/8-11 UNC-2B	4	6.00	152
4"	ANSI 150#	.75	19	5/8-11 UNC-2B	8	7.50	191
6"	ANSI 150#	.88	22	3/4-10 UNC-2B	8	9.50	241
8"	ANSI 150#	.88	22	3/4-10 UNC-2B	8	11.75	298
10"	ANSI 150#	1.00	25	7/8-9 UNC-2B	12	14.25	362
12"	ANSI 150#	1.00	25	7/8-9 UNC-2B	12	17.00	432
14"	ANSI 150#	1.13	29	1 -12 UNC-2B	12	18.75	476

SIZE	FLANGE DRILLING	HOLE DIA.		TAPPED HOLE	NO. OF HOLES	BOLT CIRCLE DIA.	
		in	mm			in	mm
2"	JIS 10K	.75	19	M16 x 2.0-6H	4	4.72	120
3"	JIS 10K	.75	19	M16 x 2.0-6H	8	5.91	150
4"	JIS 10K	.75	19	M16 x 2.0-6H	8	6.89	175
6"	JIS 10K	.91	23	M20 x 2.5-6H	8	9.45	240
8"	JIS 10K	.91	23	M20 x 2.5-6H	12	11.42	290
10"	JIS 10K	.98	25	M22 x 2.5-6H	12	13.98	355
12"	JIS 10K	.98	25	M22 x 2.5-6H	16	15.75	400
14"	JIS 10K	.98	25	M22 x 2.5-6H	16	17.52	445

SIZE	FLANGE DRILLING	HOLE DIA.		TAPPED HOLE	NO. OF HOLES	BOLT CIRCLE DIA.	
		in	mm			in	mm
2"	PN 10	.71	18	M16 x 2.0-6H	4	4.92	125
3"	PN 10	.71	18	M16 x 2.0-6H	8	6.30	160
4"	PN 10	.71	18	M16 x 2.0-6H	8	7.09	180
6"	PN 10	.87	22	M20 x 2.5-6H	8	9.45	240
8"	PN 10	.87	22	M20 x 2.5-6H	8	11.61	295
10"	PN 10	.87	22	M20 x 2.5-6H	12	13.78	350
12"	PN 10	.87	22	M20 x 2.5-6H	12	15.75	400
14"	PN 10	.87	22	M20 x 2.5-6H	16	18.11	460

SIZE	FLANGE DRILLING	HOLE DIA.		TAPPED HOLE	NO. OF HOLES	BOLT CIRCLE DIA.	
		in	mm			in	mm
2"	PN 16	.71	18	M16 x 2.0-6H	4	4.92	125
3"	PN 16	.71	18	M16 x 2.0-6H	8	6.30	160
4"	PN 16	.71	18	M16 x 2.0-6H	8	7.09	180
6"	PN 16	.87	22	M20 x 2.5-6H	8	9.45	240
8"	PN 16	.87	22	M20 x 2.5-6H	12	11.61	295
10"	PN 16	1.02	26	M24 x 3.0-6H	12	13.98	355
12"	PN 16	1.02	26	M24 x 3.0-6H	12	16.14	410
14"	PN 16	1.02	26	M24 x 3.0-6H	16	18.50	470

THIS DRAWING EMBODIES A CONFIDENTIAL PROPRIETARY DESIGN ORIGINATED BY GROTH CORPORATION, AND ALL DESIGN, MANUFACTURING, REPRODUCTION, USE AND SALE RIGHTS, REGARDING THE SAME ARE EXPRESSLY RESERVED. IT IS SUBMITTED UNDER A CONFIDENTIAL RELATIONSHIP FOR A SPECIFIED PURPOSE, AND THE RECIPIENT AGREES BY ACCEPTING THIS DRAWING NOT TO SUPPLY OR DISCLOSE ANY INFORMATION REGARDING IT TO ANY UNAUTHORIZED PERSONS OR TO INCORPORATE IN OTHER PROJECTS ANY SPECIAL FEATURES PECULIAR TO THIS DESIGN. ALL PATENTS RIGHTS HERETO ARE EXPRESSLY RESERVED BY GROTH CORPORATION, 1202 HAHLO, HOUSTON, TEXAS 77020

REV.	DATE	BY	ECN NO.
A	08-22-01	ESQ	10276



GROTH CORPORATION
a Continental Disc Company

APPROVED BY:	CHECKED BY:	DWG. NO. : C-92526
DATE:	DATE:	DWN BY: ES QUINTERO

MODEL 1221B

BILL OF MATERIAL

ITEM	DESCRIPTION	STANDARD MATERIALS OF CONSTRUCTION			OPTIONAL FEATURES
		ALUMINUM □	CARBON STL. □	316 SS □	
1	BODY	AL GR 356 T6	CS WCB	CF-8M (316 SS)	
2	STUD	SS	SS	SS	
3	NUT, HEX	SS	SS	SS	
4	WASHER, LOCK	SS	SS	SS	
5	PLUG, PIPE	CS	CS	SS	
6	OUTLET	AL GR 356 T6	CS WCB	CF-8M (316 SS)	
7	ROD, GUIDE	316 SS	316 SS	316 SS	
8	* GASKET, COVER	NON-ASB	NON-ASB	NON-ASB	
9	STUD	SS	SS	SS	
10	NUT, HEX	SS	SS	SS	
11	WASHER, LOCK	SS	SS	SS	
12	CHAMBER, SPRING	AL GR 356 T6	CS WCB	CF-8M (316 SS)	
13	GASKET, CAP	SS	SS	SS	
14	CAP	CS	CS	316 SS	
15	NUT, HEX JAM	SS	SS	316 SS	
16	SCREW, ADJUSTMENT	316 SS	316 SS	316 SS	
17	BUTTON, SPRING	316 SS	316 SS	316 SS	
18	SPRING (1)	CS	CS	17-7 PH SS	
19	STEM, PRESSURE	316 SS	316 SS	316 SS	
20	PALLET, PRESSURE	316 SS	316 SS	316 SS	
21	* DIAPHRAGM, PRESSURE (2)	Teflon® FEP	Teflon® FEP	Teflon® FEP	
22	PLATE, RETAINER (PRESSURE)	316 SS	316 SS	316 SS	
23	* O-RING (PLATE PALLET) (3)	VITON	VITON	VITON	
24	NUT, HEX LOCK	SS	SS	SS	
25	* GASKET, INLET	NON-ASB	NON-ASB	NON-ASB	
26	* GASKET, COVER	NON-ASB	NON-ASB	NON-ASB	
27	COVER	AL GR 356 T6	CS WCB	CF-8M (316 SS)	
28	STUD	SS	SS	SS	
29	NUT, HEX	SS	SS	SS	
30	WASHER, LOCK	SS	SS	SS	
31	ROD, GUIDE	316 SS	316 SS	316 SS	
32	STEM, VACUUM	316 SS	316 SS	316 SS	
33	PALLET, VACUUM	316 SS	316 SS	316 SS	
34	* DIAPHRAGM, VACUUM (2)	Teflon® FEP	Teflon® FEP	Teflon® FEP	
35	PLATE, RETAINER (VACUUM)	316 SS	316 SS	316 SS	
36	WASHER, LOCK	SS	SS	SS	
37	NUT, HEX	SS	SS	SS	
38	SCREEN (OPTIONAL)	SS	SS	SS	
39	* O-RING (PLATE PALLET) (3)	VITON	VITON	VITON	
40	INSERT, SEAT (4) (NOT SHOWN)	OPTIONAL	316 SS	NOT USED	
41	PALLET WEIGHT (5) (NOT SHOWN)	LEAD	LEAD	LEAD	

* SPARE PARTS

(1) ALTERNATE SPRING MATERIALS: AL/CS UNITS - CHROME SILICON & 5160;
316 SS UNITS - 17-4 PH SS

(2) Teflon® is a registered trademark of E.I. du Pont de Nemours and Co. used under license.

(3) ELASTOMERS ALSO AVAILABLE IN AFLAS, BUNA-N, EPR & KALREZ

(4) OPTIONAL SEAT: AL UNITS - BONDED; CS UNITS - WELDED

(5) AVAILABLE IN 316 SS; CONSULT FACTORY FOR ALT. MATERIALS.

DWG. NUMBER:

C-83771

BOM NUMBER:

83771bom.xls

